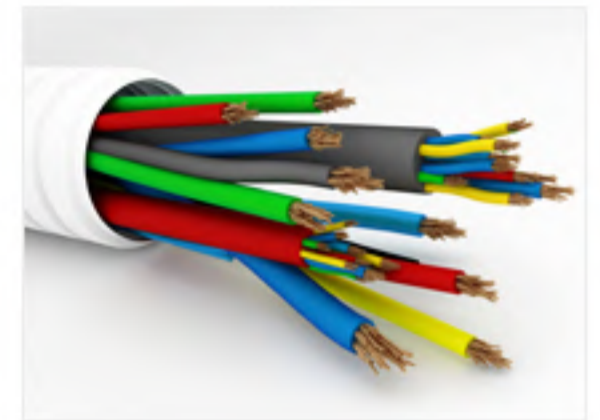
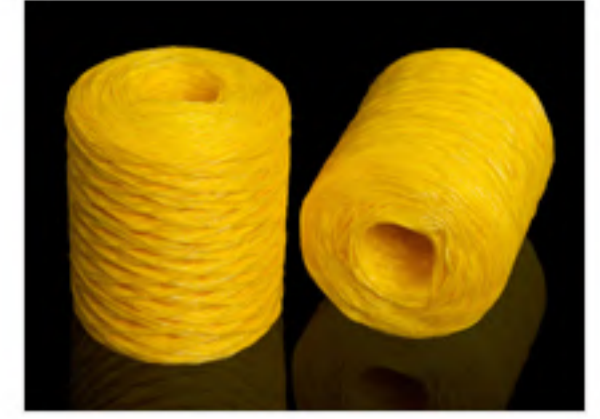


**TENSILE TESTING MACHINE**

Model No.  
**K-TTM-01LC/K-TTM-01LC-xi**



**Description**

**Kant Plastology** offering a commendable range of Digital **TENSILE TESTING MACHINE** for determines themechanical strength of various products like Plastic Pipe, HDPE/PP Tape – Fabric, Plastics rope and many more plastics products. The machine is manufactured from high grade raw material with latest technology which is inspected properly by our highly professional engineers. The offered machines owing the feature like digitally control LCD display, precision load-cell with durable and sturdy structure of machine. **Kant Plastology** provide the entire range of **TENSILE TESTING MACHINE** with multitude of sizes, designs and other related customize specification and designs.

**Specification**

MODEL (K-TTM-01LC/K-TTM-01LC-xi)	
Available In Test Capacity	250kgf / 2500N, 500kgf / 5kN, 1000kgf / 10kN
System Status	<p><b>Digital model – K-TTM-01LC</b> blue color four line LDC display indicated the value of load &amp; extension, testing speed &amp; type of test and machine operate through manual function only</p> <p><b>Computer interface model – K-TTM-01LC-xi</b> the windows based software to interface the computer, data entry through software, PC connectivity of RS – 232 &amp; graphical data type reports can be printed through software.</p>
Test Jaws	Vice type test jaws for tensile test are fitted on machine
No. Of Screws	Single screw – nut (ball screw at optional) mechanism driven through reputed make motor & gearbox
Load Cell	‘S Type’ loadcell of ‘ADI artech’ make
Load Cell Unit	kgf
Cross Head Travel	700mm
Extension Accuracy	0.1mm
Speed	<p>Fixed speed of 100mm / minute or 300mm / minute</p> <p>Variable speed through frequency controlled A.C. drive available as optional</p>
Power Supply	440V AC, Three phase, 50Hz